

## SEAMLESS DATA ACQUISITION – 100% TRACEABILITY

Incoming goods system for the receipt of rolling goods and other units by analyzing different barcodes, 1D / 2D matrix codes and optional optical character recognition.

### WES V5 STANDARD FEATURES

Order-Nr. 1002416

- Automatic capture of all labels in one image without teaching
- Automatic classification of contents via prefix/identifier
- Teaching features for learning label structures without prefix/identifier
- Reading of different barcodes, 1D / 2D matrix codes and OCR (optional)
- Roll measurement (diameter) (optional)
- Document analysis via plain text (optional)
- Print editor for customized layout
- incl. **MODI LABELS** operating software
- Interfaces for assembly and warehouse management systems (optional)
- Smart modules like DateCode Translation, Rejected Batches, etc. (optional)
- Customer-specific connectivity to ERP/MES etc. (optional)

#### Scope of delivery Hardware:

- ID reading system
- high resolution camera system
- height adjustable table unit
- SQL Express database
- high performance computer - with SSD technology
- touch monitor

*excl. label printer!*

*Dimensions top edge table top:  
1500 x 800 x 880 (L x W x H in mm)  
Height of monitor stand + 500 mm  
Weight: 180 kg*



### WES V5 COMPACT FEATURES

Order-Nr. 1002417

- Automatic capture of all labels in one image without teaching
- Automatic classification of contents via prefix/identifier
- Teaching features for learning label structures without prefix/identifier
- Reading of different barcodes, 1D / 2D matrix codes and OCR (optional)
- Roll measurement (diameter) (optional)
- Document analysis via plain text (optional)
- Print editor for customized layout
- incl. **MODI LABELS** operating software
- Interfaces for assembly and warehouse management systems (optional)
- Smart modules like DateCode Translation, Rejected Batches, etc. (optional)
- Customer-specific connectivity to ERP/MES etc. (optional)

#### Scope of delivery Hardware:

- ID reading system
- high resolution camera system
- SQL Express database
- high performance computer - with SSD technology
- touch monitor

*excl. label printer!*

*Dimensions top edge table top:  
800 x 800 x 930 (L x W x H in mm)  
Height of monitor stand + 500 mm  
Weight: 124 kg*

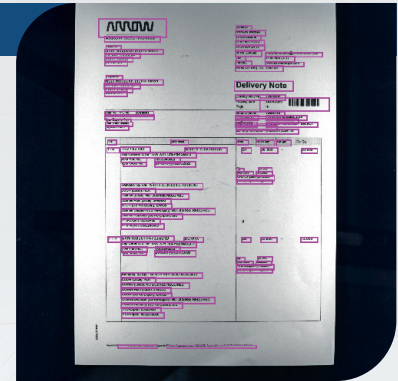


## IMPROVED LABEL DETECTION

Through optimised calculation methods, labels can now be found without training.

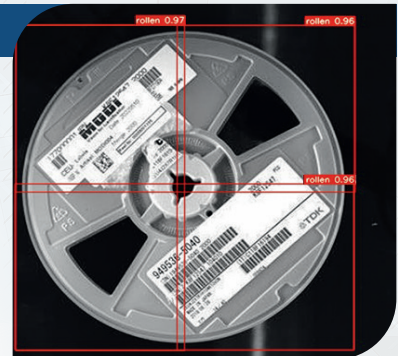
## OPTIMISED DOCUMENT ANALYSIS

Complete delivery notes are now captured by means of text recognition. Targeted teaching and automatic recording of all data is now possible. The scanned product numbers can now be matched directly with the delivery note. However, MODI recommends the comparison with the order data from your ERP system.



## ROLL MEASUREMENT THROUGH AI

The diameter of the rolls is determined during the scanning process. Optimised storage is possible. Prevent the storage of rolls that cannot be processed by your plaser. And this directly in the incoming goods department!



## CAPTURE ALL LABELS WITH ONLY ONE IMAGE

The improved camera technology in the WES V5 captures all labels at once. High-resolution images are used for 100% traceability. The reading quality and process times are significantly optimised and make work easier!

## IMPROVED READABILITY

Improved user interfaces make working with the MODI WES even easier. The tidy interface shows the most important data at a glance. The newly implemented Dark Mode is easy on the eyes.

Time	Logbook
18:25:45:242	Test: 9779998100181884 Logo
18:25:45:381	Start manufacturer: 62 013332579803
18:25:45:396	Search time: 333.18ms
18:25:45:421	OCR Patternpfad: C:\GIT\Labels\bin\Manufacturer\OCR\Text.ocr
18:25:45:422	OCR Patternpfad Neu: C:\GIT\Labels\bin\Manufacturer\OCR\Text.ocr
18:25:45:429	Num: 6218220929262667.dtl
18:25:45:424	Code39 (PRODUCTNO): 1PSSP-9004A (0 ms)
18:25:45:426	Process finished (1 ms)
18:25:45:439	OCR Count: 0
18:25:45:442	Label 3 is in process.
18:25:45:443	Scale time: 0.00ms.
18:25:45:444	Manufacturer scan method = FindFirst (1)
18:25:45:471	Last manufacturer not found looking in full list!
18:25:45:473	Search time: 14.56ms.
18:25:45:619	Prüfe Produktnummer gegen Lieferschem: 86P-9004A
18:25:45:859	Inspected component contains no errors.
18:25:46:861	CUSTOMER: 100804N001182
18:25:46:862	PRODUCTNO: 86P-9004A
18:25:46:863	QUANTITY: 150
18:25:46:864	SystemID: 1
18:25:46:865	ALL: 2 @21017@86P-9004A@2615237 @2618121641 @1832 @150@P10304N001182
18:25:46:866	ScanTime: 06.05.2022 06:25:45
18:25:46:867	LOT: 2618121641
18:25:46:868	Inspection process finished.
18:25:46:870	Process time: 1.79 seconds.

Statistic	Count
TOTAL:	7
OK:	7 (100.0%)
NOK:	0 (0.0%)



EFFICIENCY  
STARTS HERE