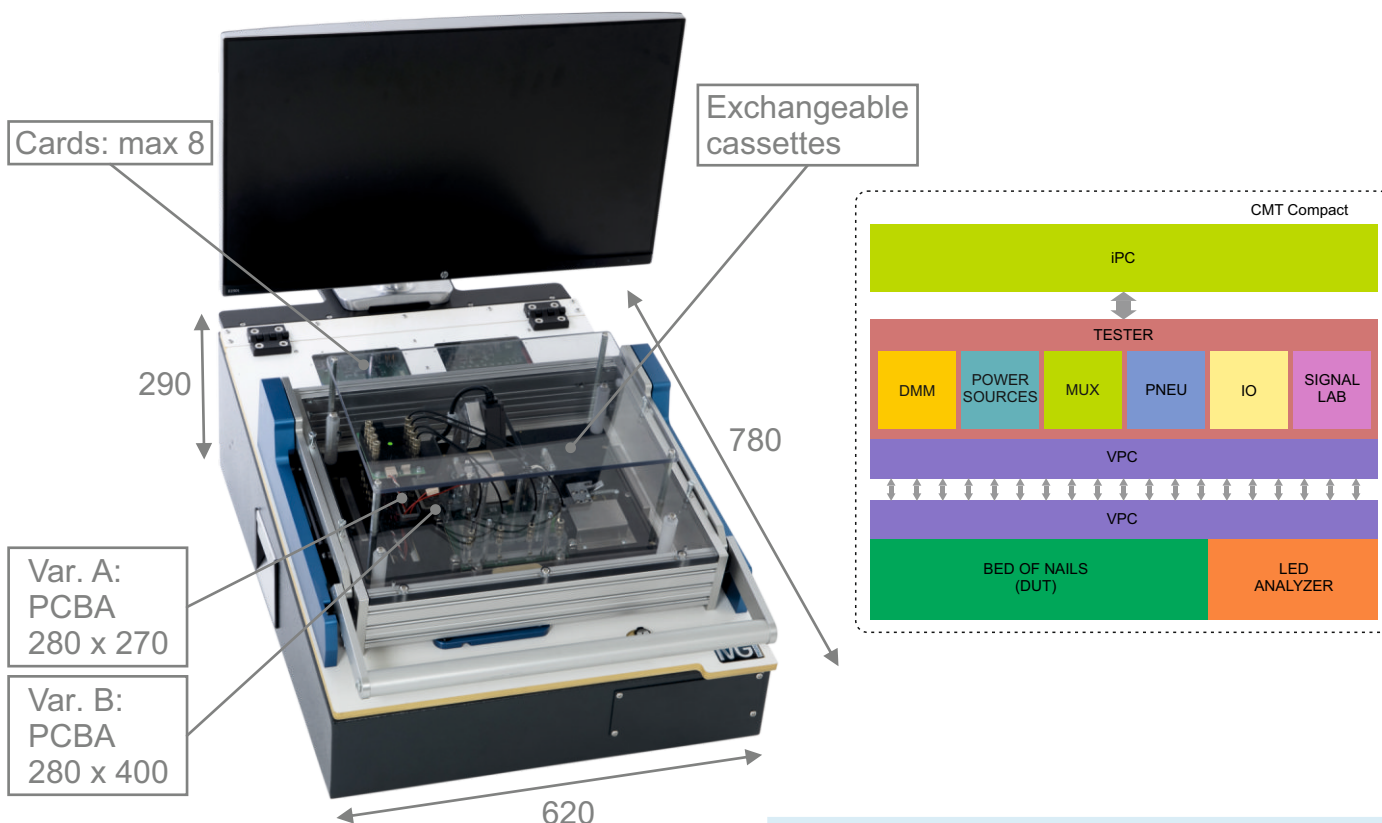


# Compact CMT



Standalone FCT / ICT solution

Highly integrated tester suitable for testing ECUs, LED, TCU and other PCBAs. Ready for flashing, component testing, functional testing, end of line testing or development of electronics. Controlled by UNILAB based on LabView or LabView and TestStand from Windows operation system. Low voltage 90 channels multiplexer, 16 digital I/O, 16 pneumatical channels, integrated power sources, DMM, RLC, SW oscilloscope, digitizer and spectrum analyser. All packed in desktop solution for your lab or production area. Exchangeable cassettes connected by VPC interface allows fast changes of tested device type.



## FEATURES

- Signal analyser
- Signal generator
- Spectrum analyser
- Digital multimeter
- CAN, LIN, UART, I2C, RS-232, RS-485
- Analog multiplexer
- LED analyser
- Buttons actuators
- Datalogging
- MES connectivity

## BENEFITS

- Modular tester
- Exchangeable cassettes
- Cassettes identification
- Small footprint
- Integrated Industrial PC with Windows
- 3rd party instruments integration

# Designed to test



# Compact CMT

Standalone FCT / ICT solution



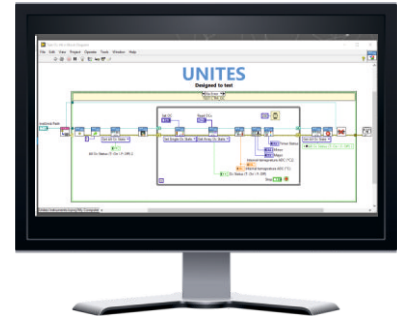
## SOFTWARE



UNILAB



TestStand



LabView

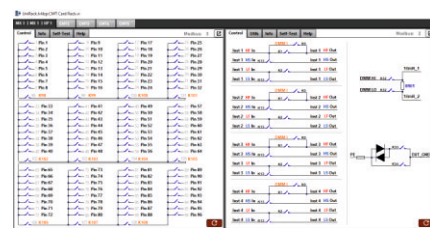
UNILAB is a powerful testing software that offers a comprehensive solution for controlling measurement and operational hardware. It enables the sequencing of testing steps, logging of results, and integration with various programming languages. Additionally, it allows remote control via a web interface or API, enhancing its flexibility and usability across a wide range of applications.

TestStand is a well-known sequencer from National Instruments for developing automated test systems. Together with LabView SW it is a powerful tool with worldwide support. TestStand platform allows us to design GUI (Graphical User Interface) according to the customer's needs.

LabView is graphical systems engineering software for application requiring test, measurement and control. It is an open SW platform allowing integration of systems from other vendors (power supplies, DMMs, converters, etc.). It is a worldwide standard for measurement systems.

## VIRTUAL COCPIT

Virtual Cockpit - Advanced graphical control center of the tester. It enables technicians to set up, operate, and monitor the status of each tester tool. Tools can be anchored to emulate their actual position in the rack or displayed in an independent window to remain constantly visible. The visualization is independent of the testing process, allowing it to change during testing and enabling technicians to view real-time values.



# Designed to test

UNITES Systems a.s.  
Kpt. Macha 1372  
Valašské Meziříčí  
Czech Republic

Tel.: +420 571 757 230  
E-mail: info@unites.cz  
www.unites.cz  
www.unites-systems.com