

ZENITH2

REVOLUTIONARY NEW TRUE 3D AOI WITH ADVANCED ALGORITHMS AND A WIDE RANGE OF INSPECTION CAPABILITIES

“Unveiling ground-breaking functionalities with true 3D measurement technology and an intelligent platform with easy programming and usability, helping users achieve peak performance.”



Zenith2 is blazing a trail for Advanced Optical Inspection systems in SMT process management, combining our advanced vision algorithms with innovative high-resolution optics. A notable improvement on the limitations of conventional 2D AOI platforms, Zenith2 is here to fulfill the future of advanced optical inspection delivering best-in-class performance, functionality and accessibility with a wide range of inspection capabilities.



AI-Driven Auto Programming for Rapid Job Programming



Enhanced Auto-Verification Capabilities for Low TCoO



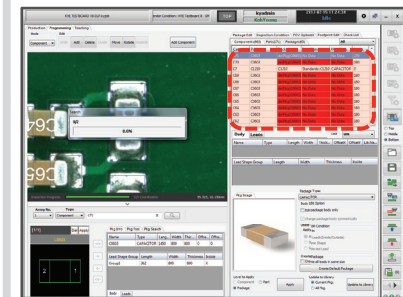
Side-View Camera Solutions for Expanded Inspection Capabilities



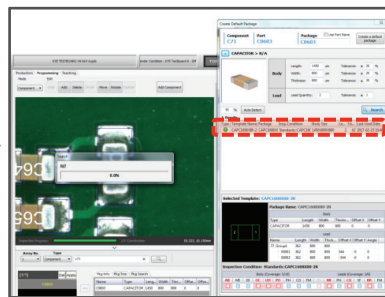
KSMART: Cutting-Edge Process Optimization Tools for Smart Factory Realization

01. AI-Driven Auto Programming for Rapid Job Programming

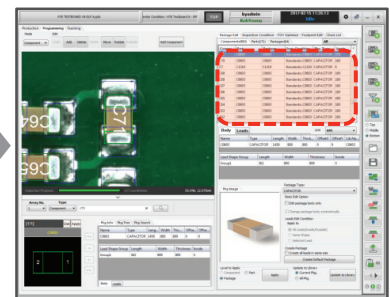
The optimized, user-friendly graphic interface is simple to use with flexible, custom configurations as well as AI-driven measuring of selected components that proposes recommended inspection conditions from KY Templates built by AOI experts. This allows for simple, seamless and super-fast auto programming that guarantees true-to-life 3D inspection, yielding a 70% reduction in programming time.



Step 1. Click on un-programmed component, part or package.



Step 2. The auto-program engine instantly measures the selected component and proposes the recommended inspection conditions from KY Templates built by AOI experts.



Step 3. Similar components are programmed automatically for a 70% time savings.

Zero downtime with a 70% reduction in programming time.



ZENITH2

REVOLUTIONARY NEW TRUE 3D AOI WITH ADVANCED ALGORITHMS AND A WIDE RANGE OF INSPECTION CAPABILITIES



02. Side-View Camera Solutions for Expanded Inspection Capabilities

- Leadless Chip
- SOJ
- Connector
- QFN

KY's side-view camera solution allows Zenith2 to quickly detect and analyze defects on a wide range of mounted components and chips.

03. Enhanced Auto-Verification Capabilities for Low TCoO

- Light Intensity
- XY Offset
- Height Accuracy
- PZT Feed and more

Self diagnosis of lighting and calibration ensures an optimal environment & lower TCoO.

04. KSMART: Cutting-Edge Process Optimization Tools for Smart Factory Realization

SPC@KSMART

Increases equipment uptime by helping operators perform critical process analyses and optimize default settings from an intuitive graphical interface.

Library Manager@KSMART

The Library Manager stores inspection conditions and real-time job files in a centralized database and distributes the data to multiple machines.

Offline Program Optimizer@KSMART

The Offline Program Optimizer makes program creation, debugging and updates seamless. Allowing operators to automatically deploy modified inspection conditions and fine tune processes starting from the next PCB without altering the production schedule.

Link@KSMART

Links all inspection results, merging images, trends, charts and inspection results including detailed analysis from the SPI, pre-reflow AOI and post-reflow AOI for total line communication and process analysis.

05. Specifications

Camera	12MP / 15um		
Camera Pixel / Resolution	12MP / 15um		
Inspection Area	L	Dual Lane	XL
Max. PCB Size (X x Y, with Side Camera)	Single Lane 330 x 510mm (12.9 x 20.0 inches)	Single Mode: 330 x 580 mm (12.9 x 22.8inches) Dual Mode: 330 x 320 mm (12.9 x 12.5 inches)	Single Lane 510 x 690 mm (20.0 x 27.1 inches)
Max. PCB Size (X x Y, without Side Camera)	510 x 510 mm (20.0 x 20.0 inches)	Single Mode: 510 x 580 mm (20.0 x 22.8 inches) Dual Mode: 510 x 320 mm (20.0 x 12.5 inches)	700 x 690 mm (27.5 x 27.1 inches)
PCB Thickness	0.4 ~ 5mm (0.01 x 0.20 inches)		0.5 ~ 8mm (0.02 x 0.30 inches)
Max. PCB Weight	8kg (17.6 lbs)		
Installation	L	Dual Lane	XL
Dimensions (W x D x H)	Single Lane 1000 x 1530 x 1805 mm (39.3 x 60.2 x 71.0 inches)	Dual Lane 1000 x 1710 x 1805 mm (39.3 x 67.3 x 71.0 inches)	Single Lane 1200 x 1710 x 1805 mm (47.2 x 67.3 x 71.0 inches)
System Weight	850 kg (1873.9 lbs)		900 kg (1894.1 lbs)
Installation Requirements (Electrical & Air)	220 VAC, 50/60 Hz Single Phase, 5-8 Kgf/cm ²		

※ Above specifications are subject to change without notice.